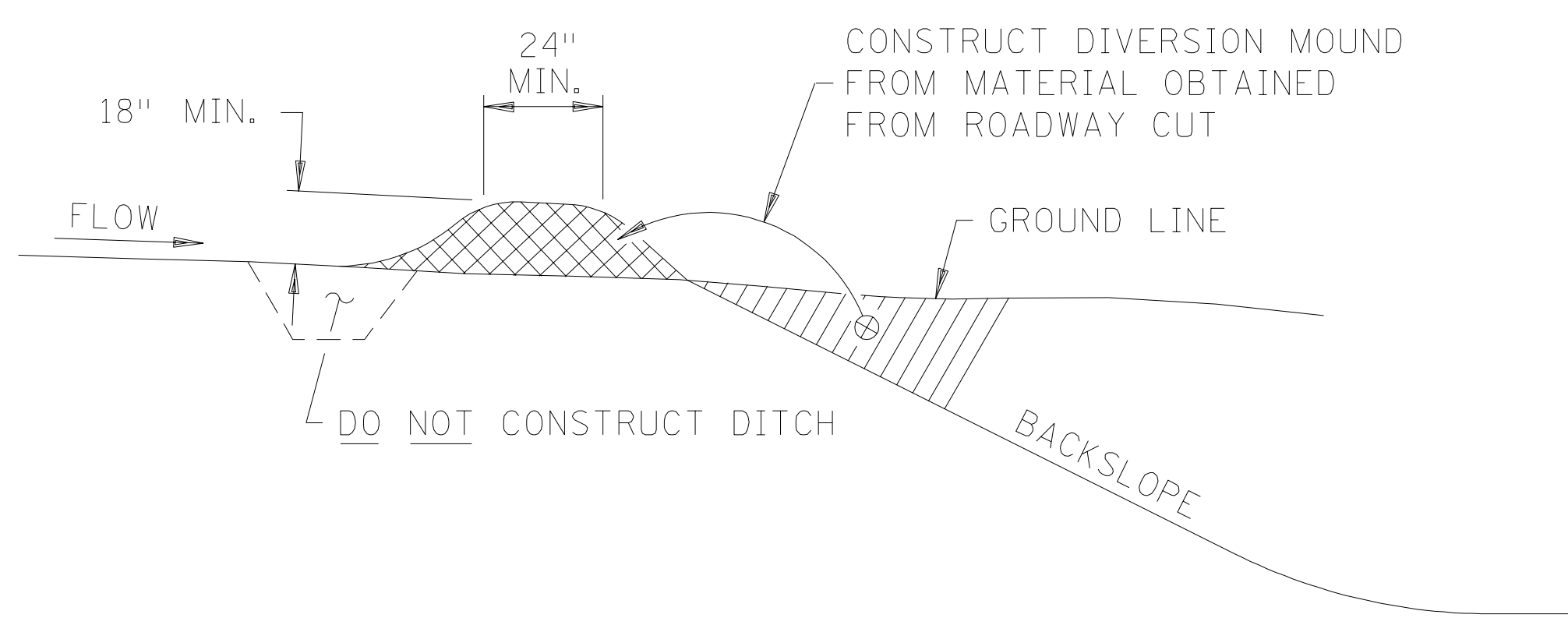


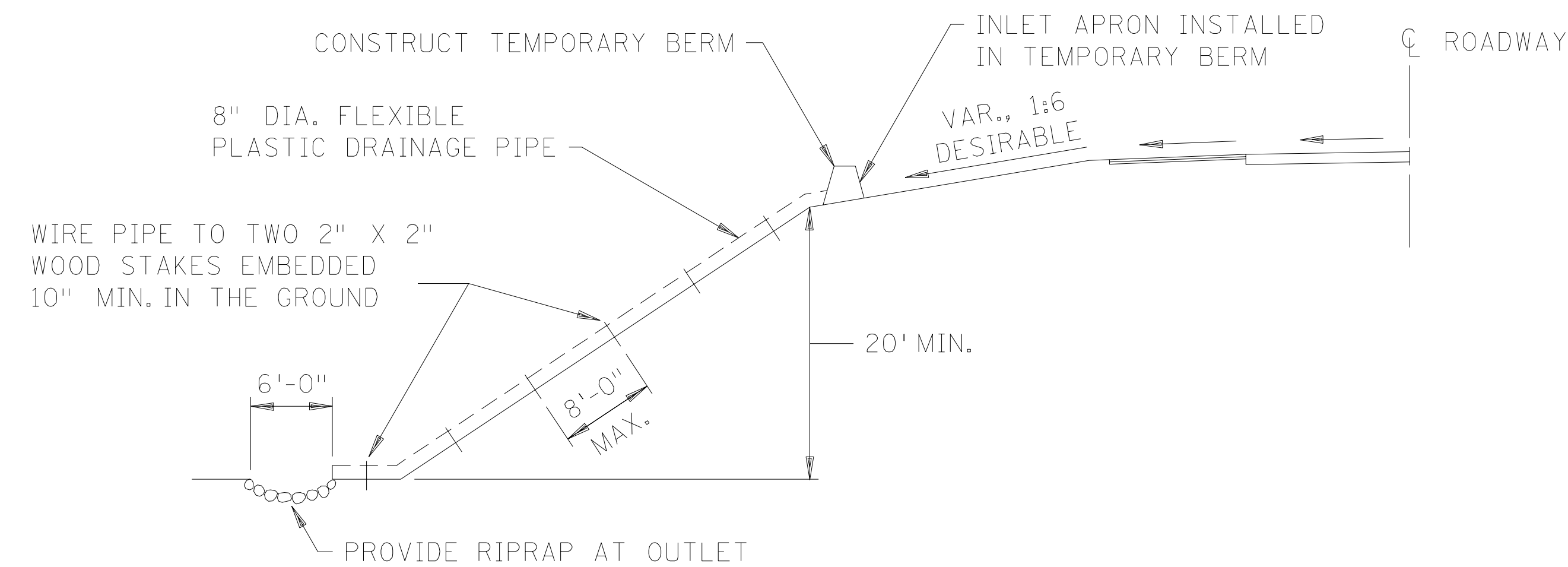
PLOTTED/REVISED: \$\$\$@DATE@\$\$\$

\$\$\$@PATH@FILENAME@\$\$\$

I PLOT NAME: \$\$\$@IPLLOT@NAME@\$\$\$  
PATH & FILE NAME:  
FILE NAME: S4052\_SPINDGN

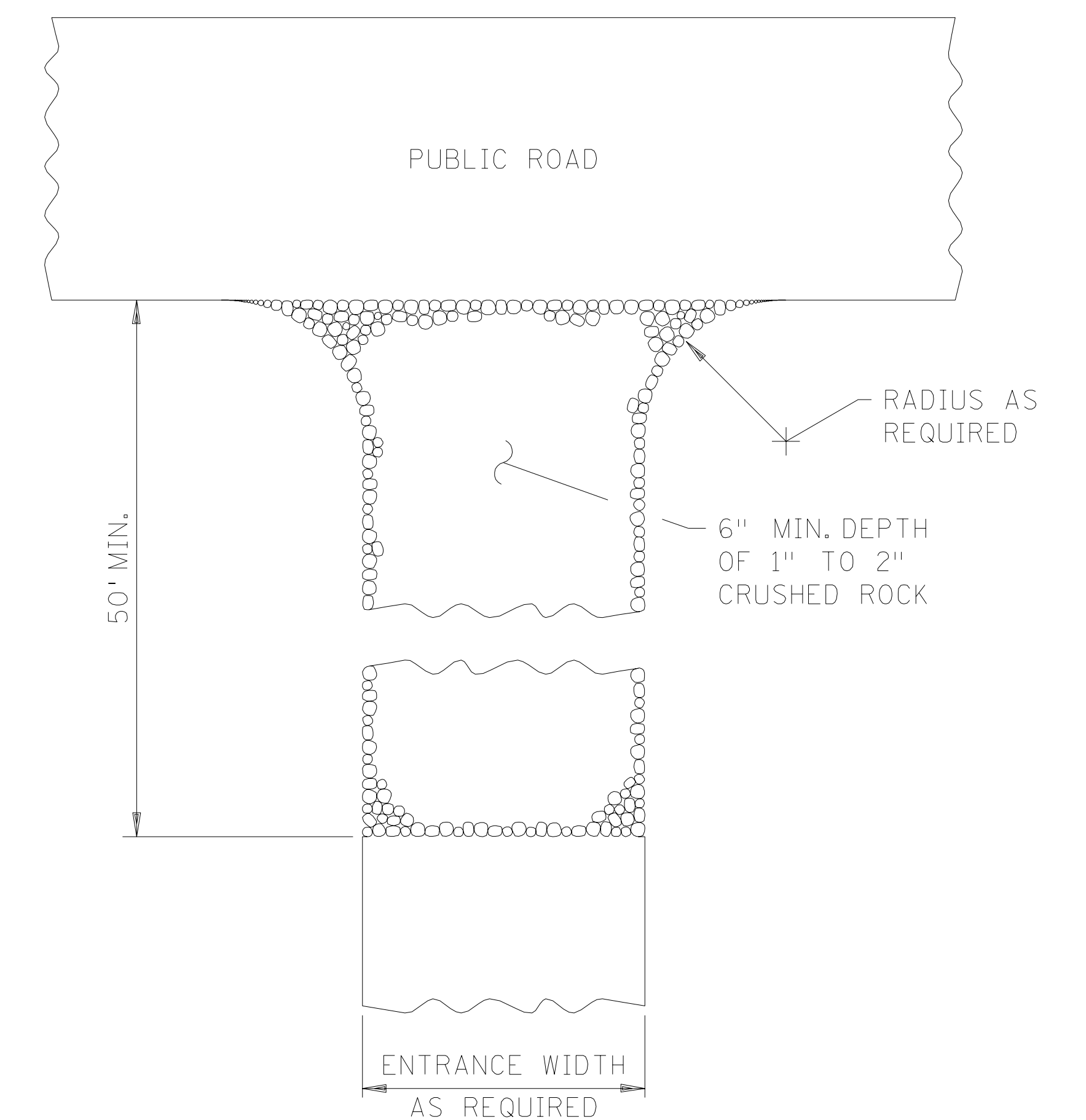


**DIVERSION MOUND**  
 DESIGN GUIDELINES:  
 STORM FREQUENCY: 10 YEAR - 24 HOUR  
 MAXIMUM DRAINAGE AREA: 5 ACRES  
 MAXIMUM DIVERSION: GRADE 5%

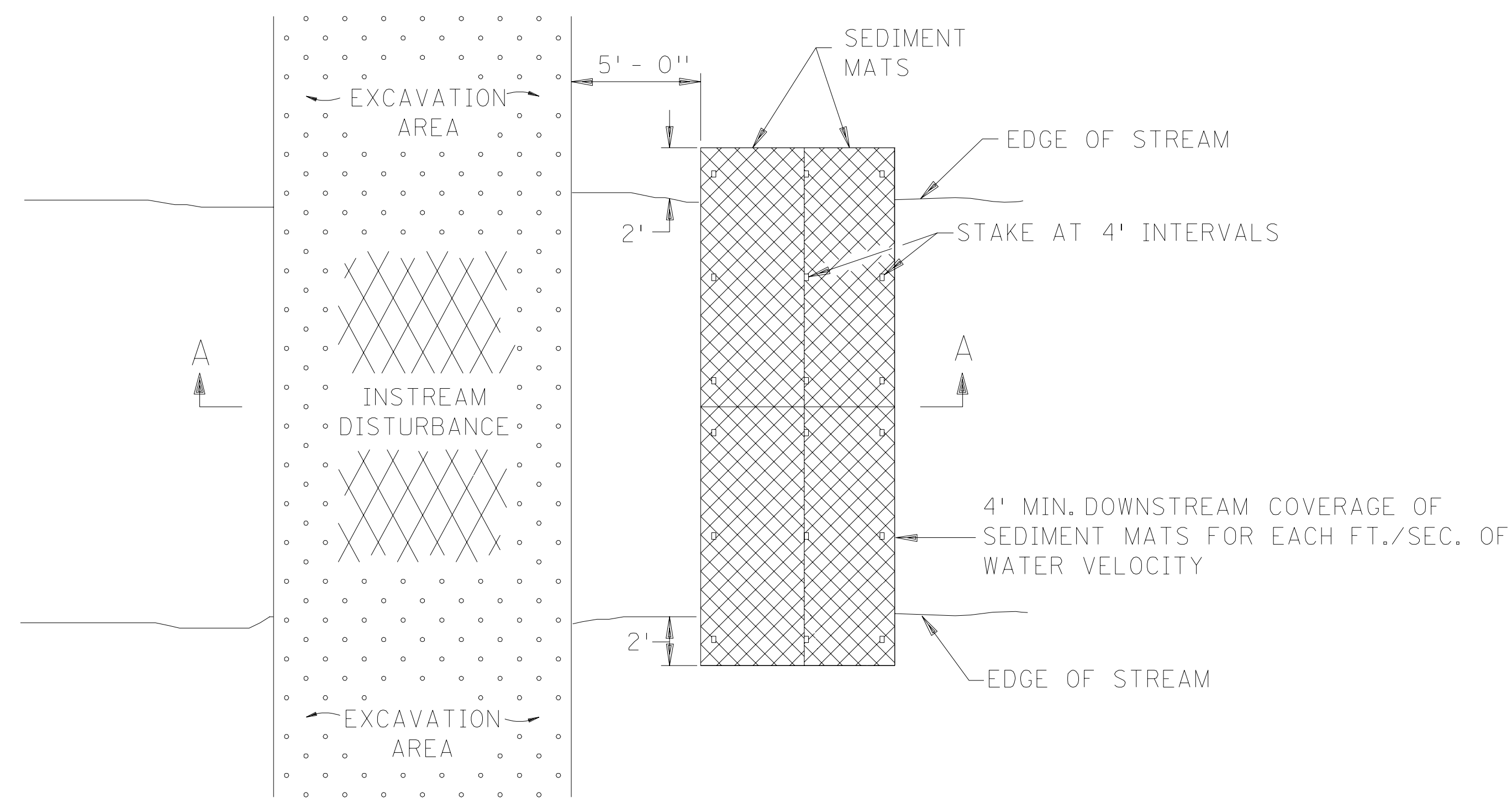


**TEMPORARY DOWN DRAIN ON FILL SLOPE**

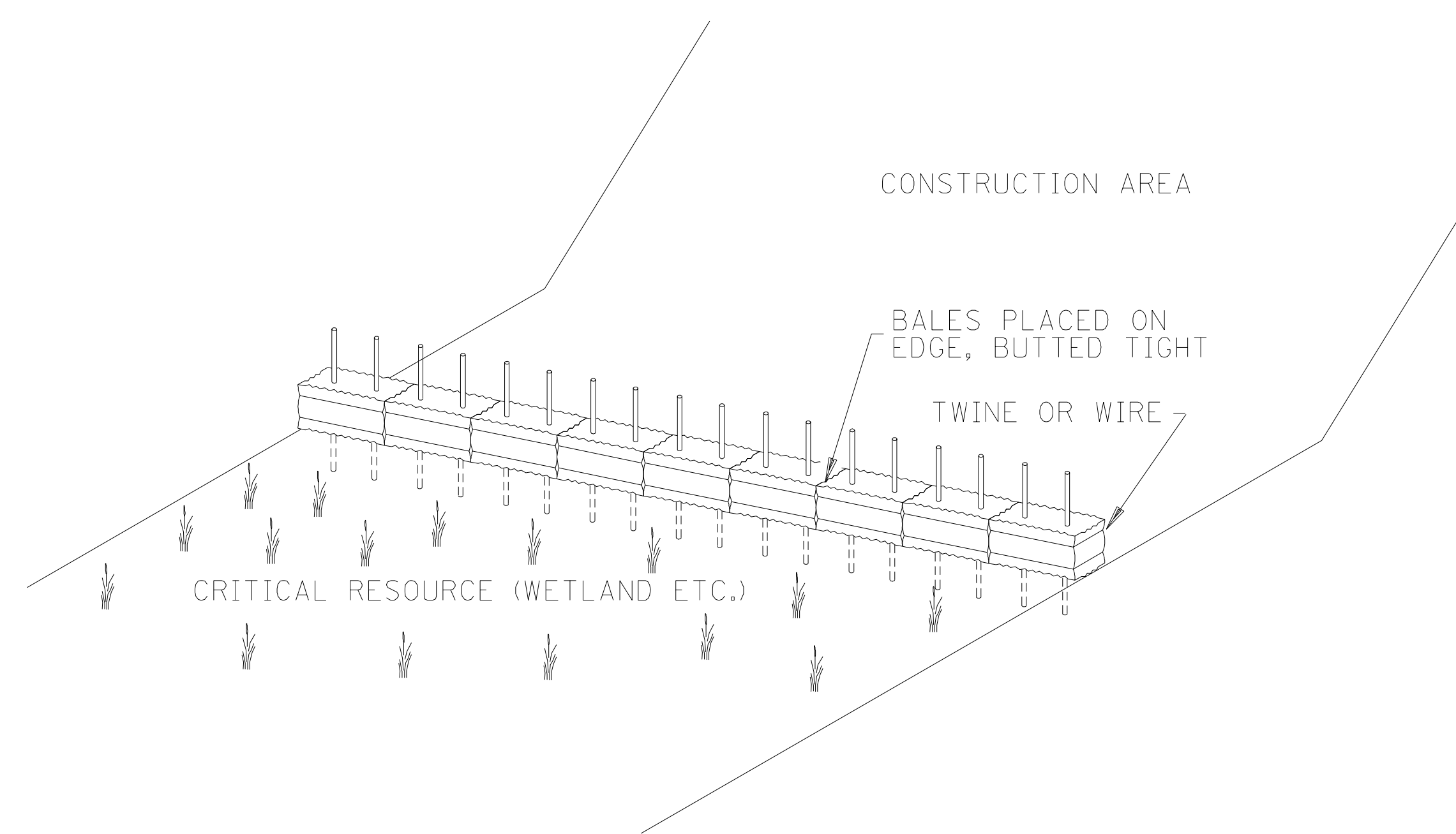
(SPEC 3892)  
 DESIGN GUIDELINES:  
 STORM FREQUENCY: 2 YEAR - 24 HOUR  
 MAXIMUM DRAINAGE AREA: 3 ACRES



**ROCK CONSTRUCTION ENTRANCE ①**

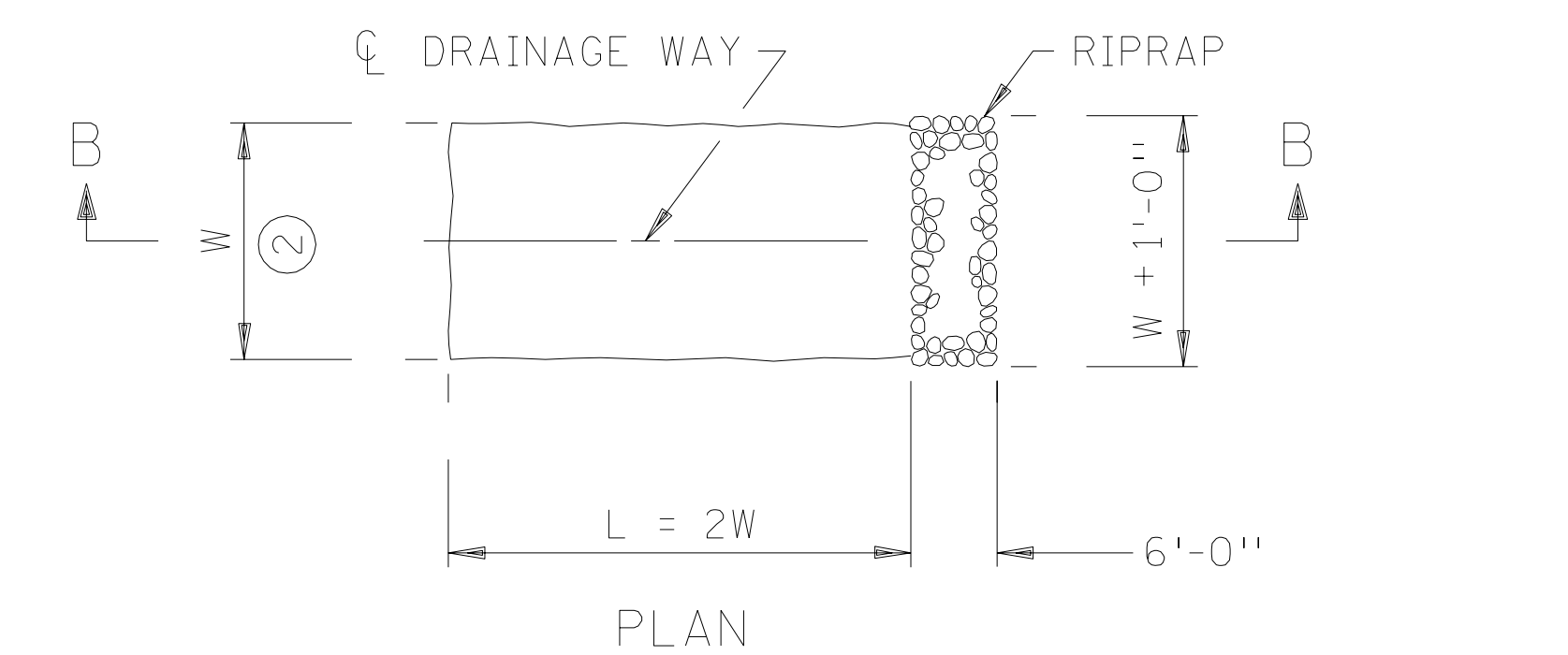


**PLAN VIEW**

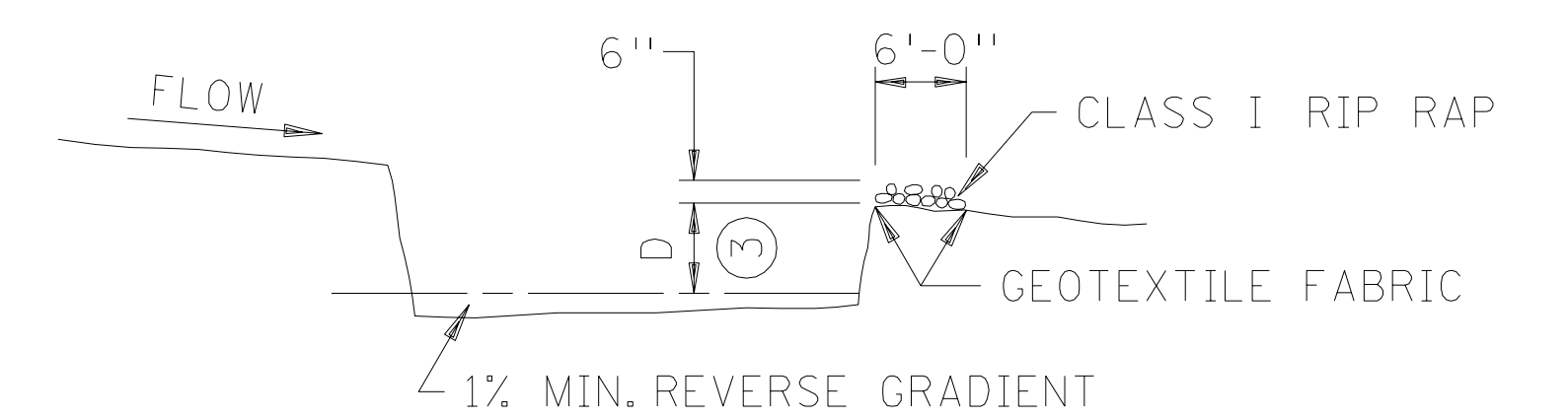


**BALE BARRIERS**

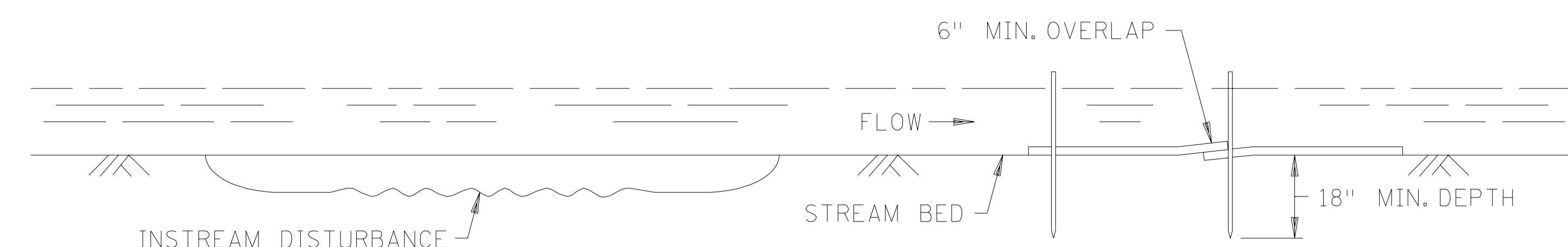
TO BE USED FOR CRITICAL PERIMETER CONTROL AREAS  
 (SPEC. 2573)



**PLAN**

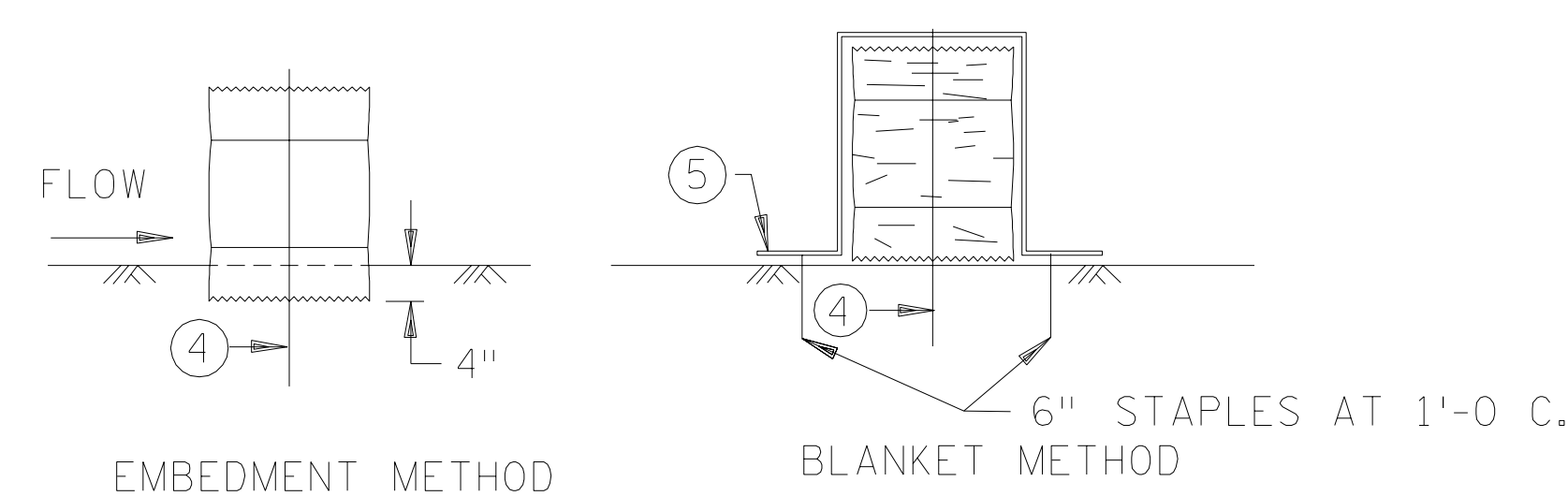


**SECTION B-B  
 SEDIMENT TRAP DETAIL**  
 (SPEC. 2573)



**SECTION A-A**

**SEDIMENT MAT**  
 (SPEC. 3894)  
 TYPICAL STREAM BED INSTALLATION  
 DESIGN GUIDELINES:  
 MAXIMUM FLOW VELOCITY: 5 FT./SEC.  
 MAXIMUM FLOW DEPTH: 2 FT.



**BALE BARRIER DETAIL**  
 APPROX. BALE SIZE: 14" X 18" X 36" LONG

**NOTES:**

- SEE SPECS. 2573, 3892, & 3894.
- ① ROCKS AT ENTRANCE CLEAN WORKSITE MUD OFF OF TRUCK TIRES BEFORE TRUCKS ENTER MAIN ROAD. KEEPING MUD OFF THE ROAD WILL PREVENT AUTO DAMAGE AND KEEP CONSTRUCTION SEDIMENT OUT OF DRAINAGE SYSTEMS AND WETLANDS.
- ② W = 10 FT. MIN., 20 FT. MAX.
- ③ D = 2 FT.
- ④ TWO 2 IN. X 2 IN. WOOD STAKES OR REINFORCING BARS IN EACH BALE EMBEDDED 10 INCHES MINIMUM IN THE GROUND.
- ⑤ PLACE A CATEGORY 3 EROSION CONTROL BLANKET, 6 FT. WIDE MINIMUM, OVER THE BALE INSTEAD OF TRENCHING.

STANDARD SHEET NO. 5-297.405 (2 of 4)	TITLE: TEMPORARY SEDIMENT CONTROL MISCELLANEOUS DETAILS
STANDARD APPROVED: NOT APPROVED	
STATE PROJ. NO. _____	SHEET NO. ____ OF ____ SHEETS

REFERENCE DATE  
8-31-05