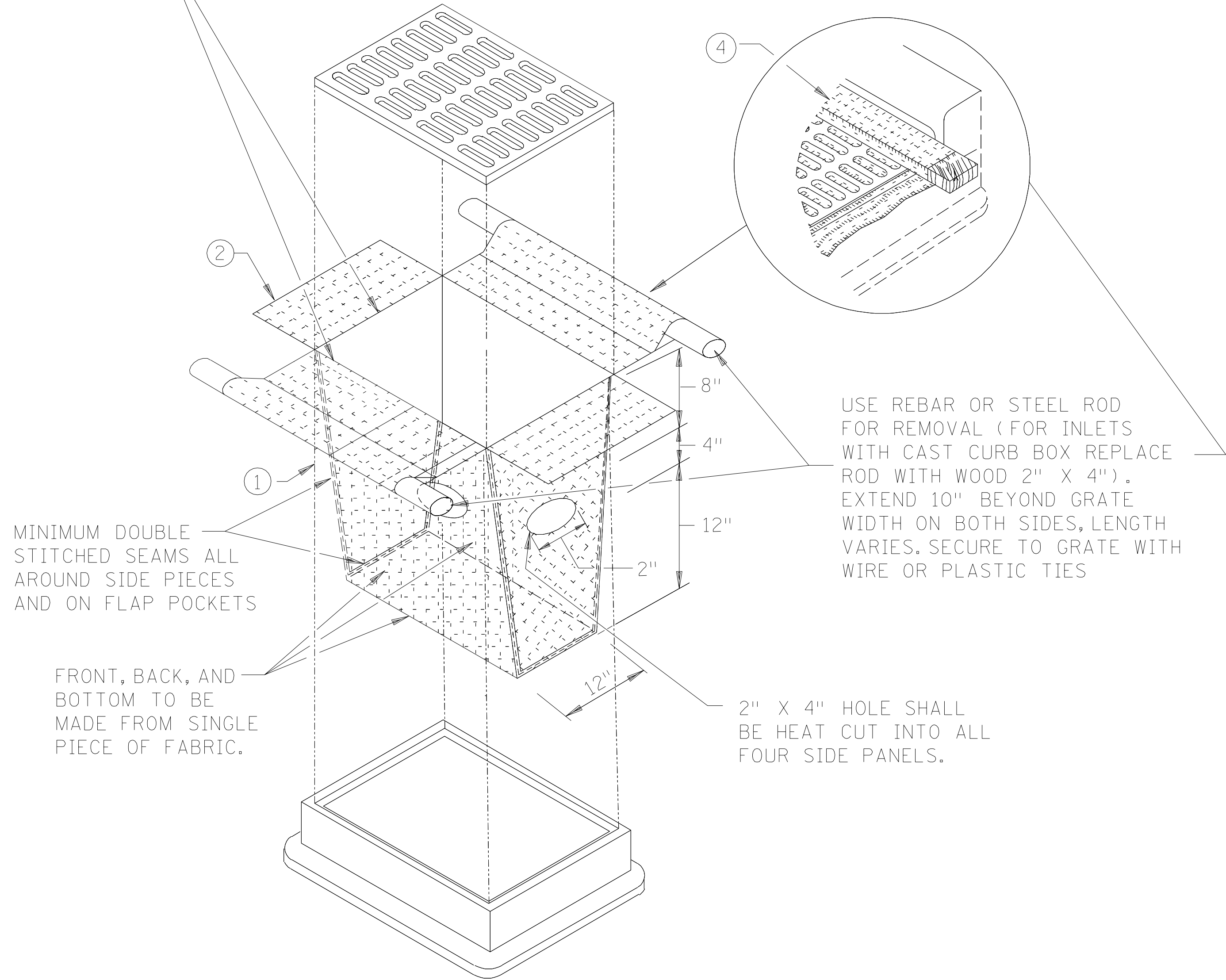


PLOTTED/REVISED:  
\$\$\$\$@DATE@\$\$\$\$

PATH & FILE NAME:  
\$\$\$\$@PATH@FILENAME@\$\$\$

IPLOT NAME: \$\$\$@IPLOT\$NAME@\$\$  
FILE NAME SM4054.SFN

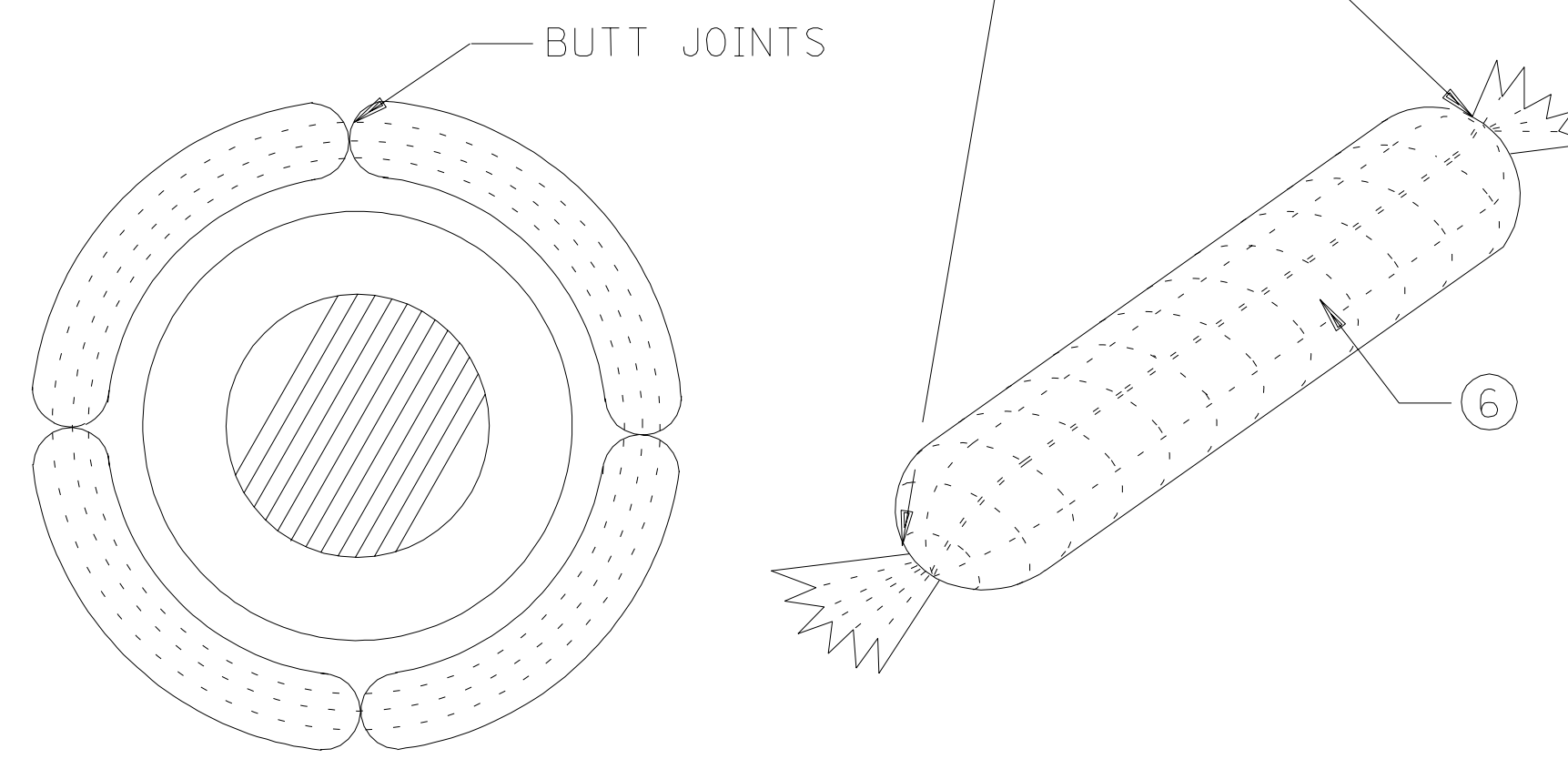
INLET SPECIFICATIONS AS PER THE PLAN  
DIMENSION LENGTH AND WIDTH TO MATCH  
FLAP POCKET



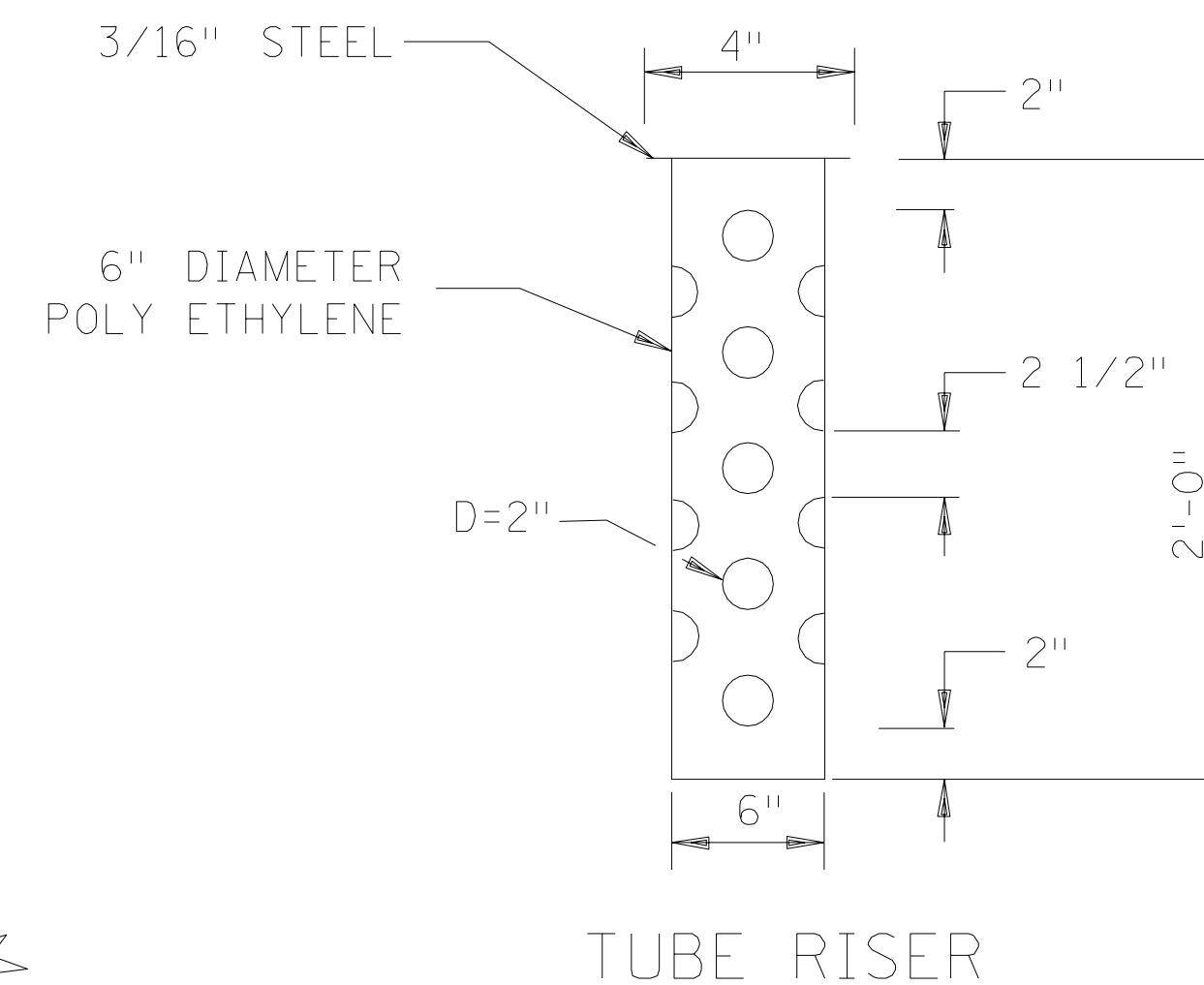
FILTER BAG INSERT ③

(CAN BE INSTALLED IN ANY INLET TYPE  
WITH OR WITHOUT A CURB BOX)

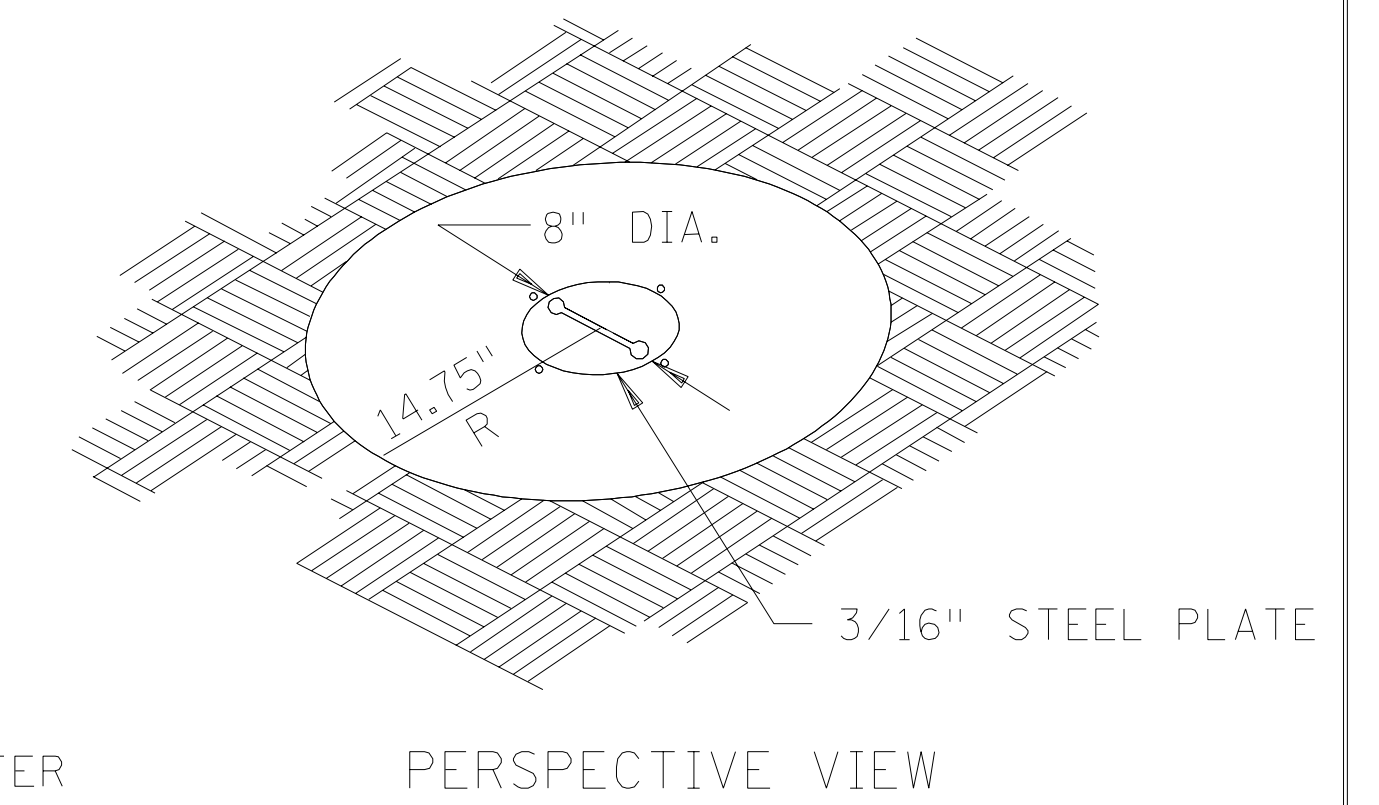
ENDS SECURELY CLOSED TO  
PREVENT LOSS OF OPEN GRADED  
AGGREGATE FILL. SECURED WITH  
50 PSI. ZIP TIE.



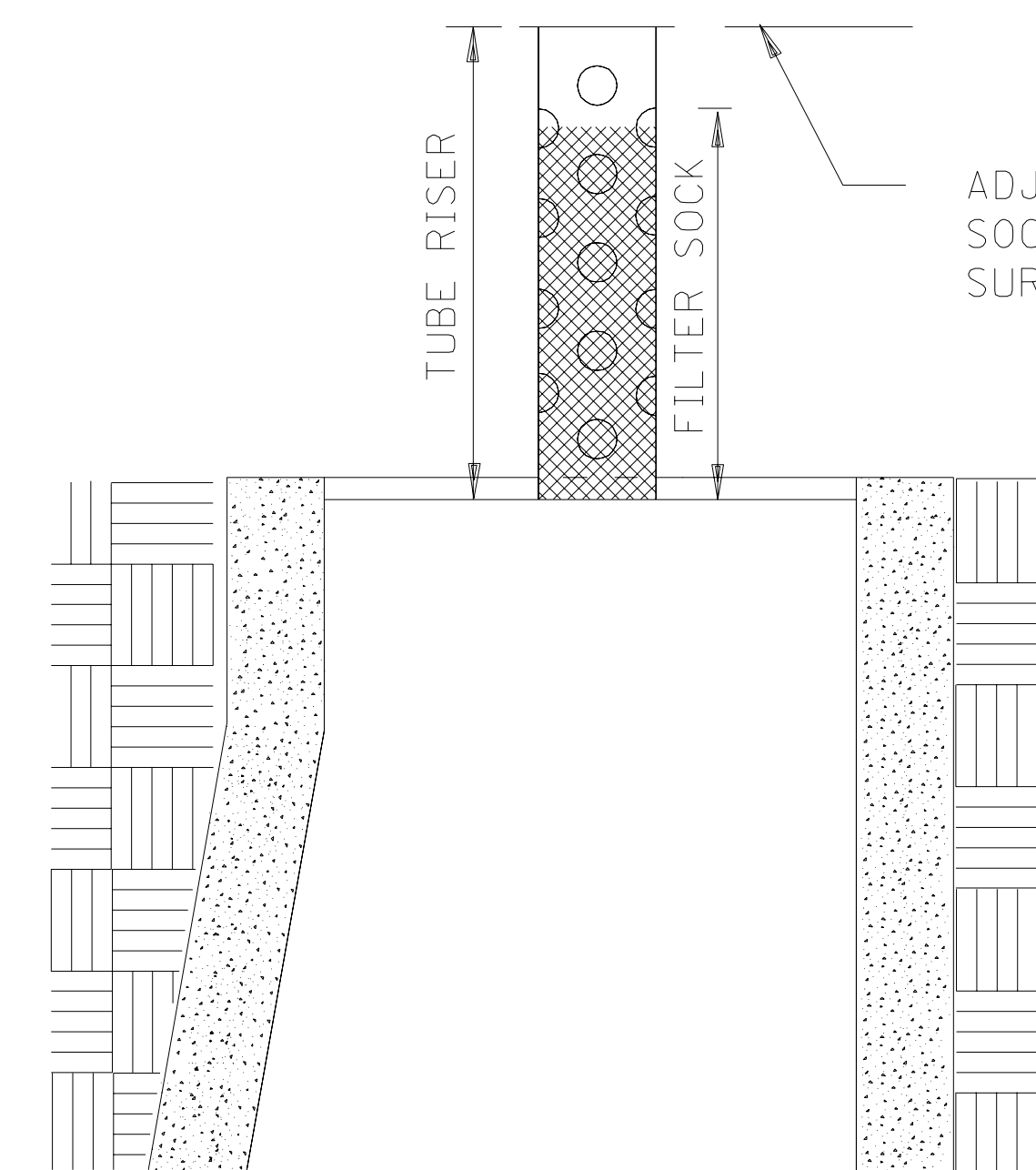
ROCK LOG ①



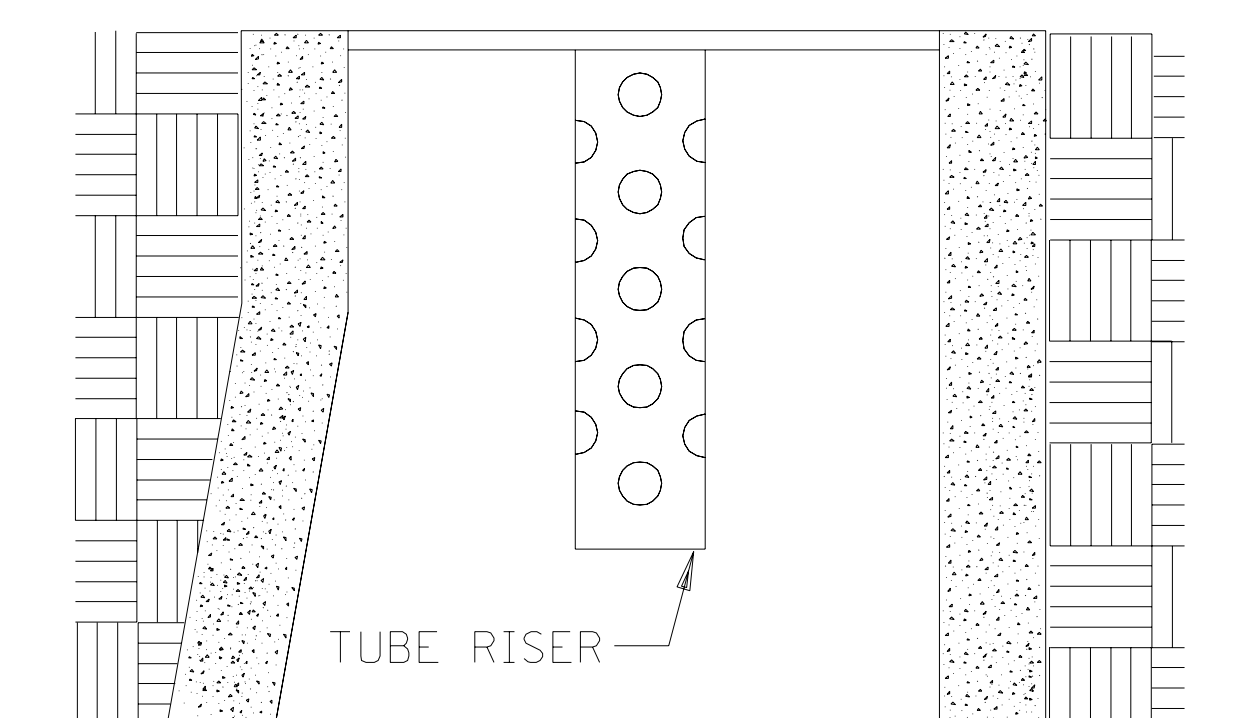
TUBE RISER



PERSPECTIVE VIEW

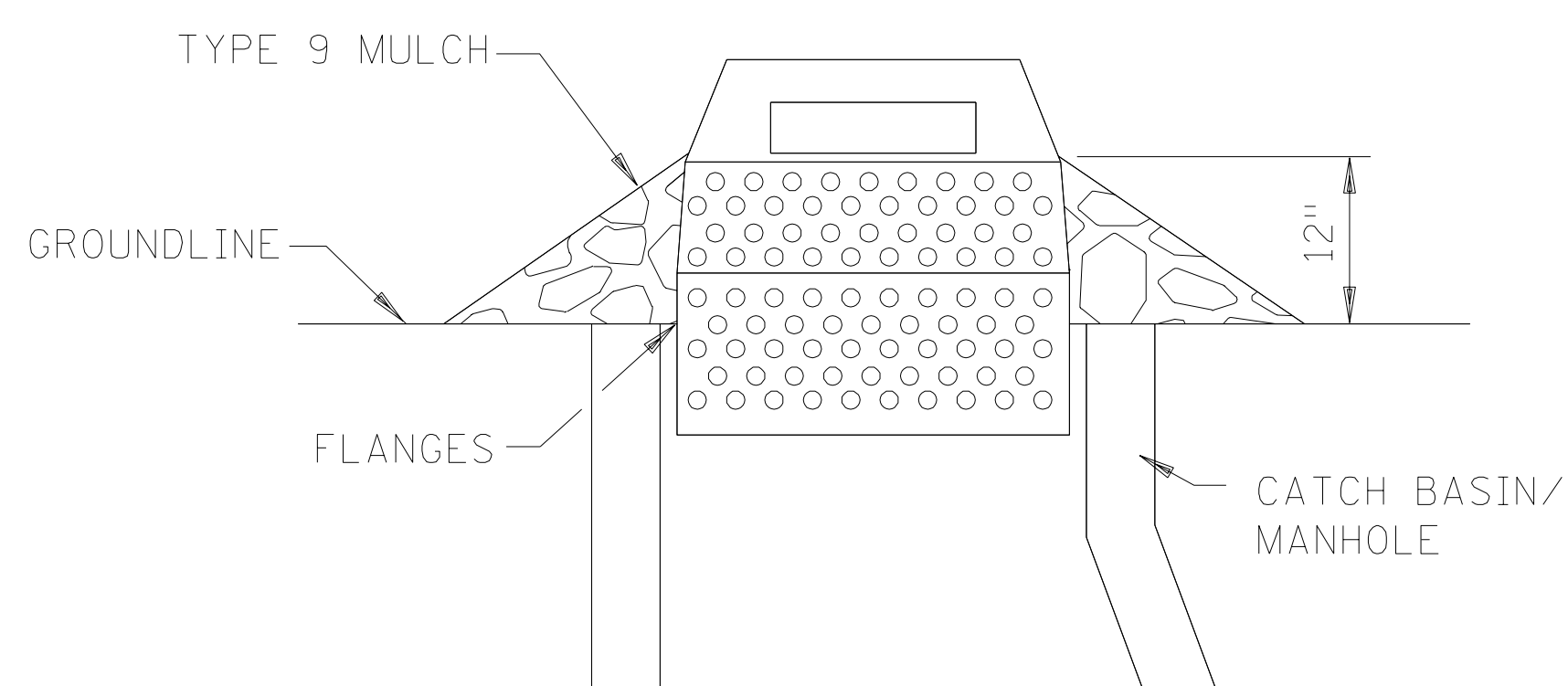


SECTION  
(UP POSITION)



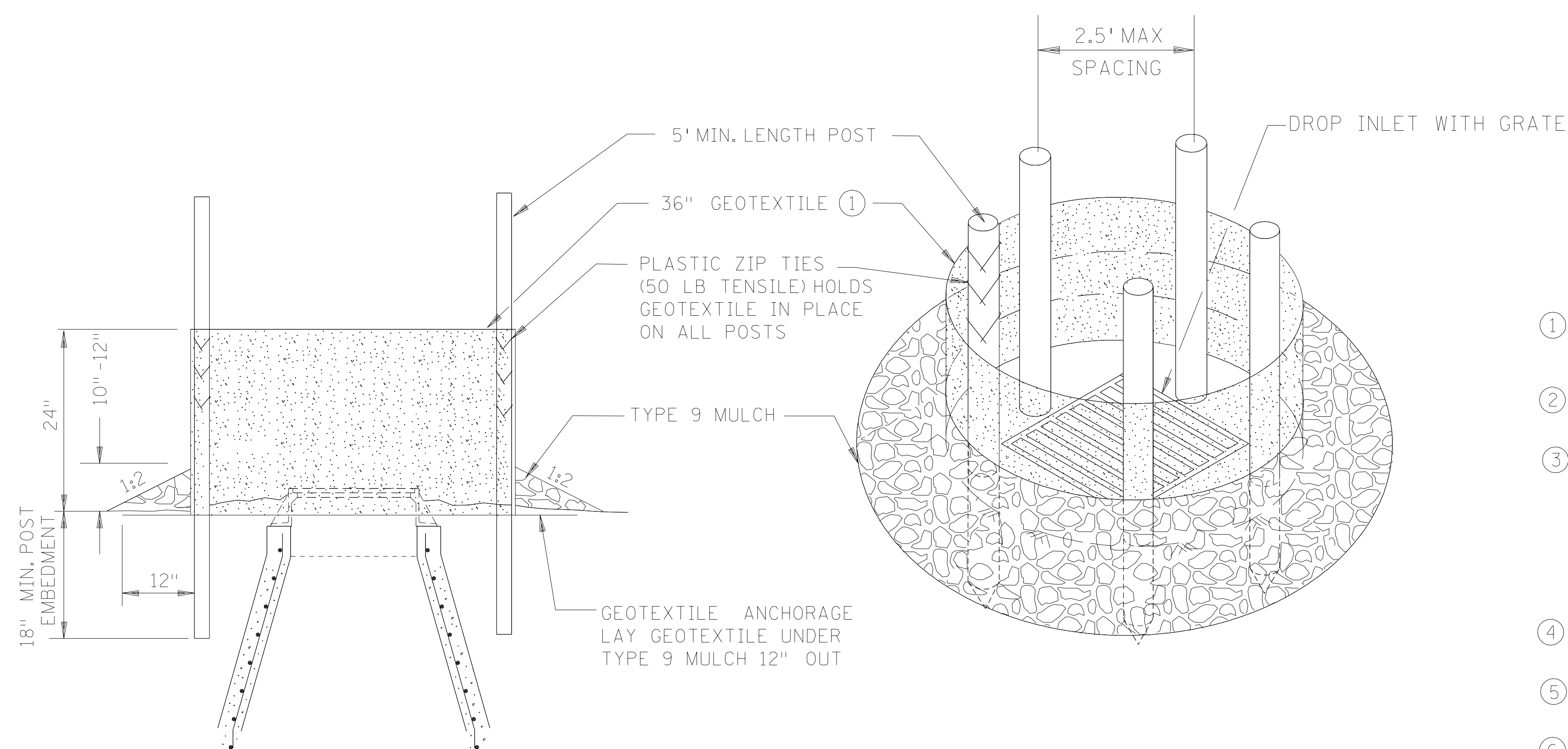
SECTION  
(DOWN POSITION)

POP-UP HEAD



SEDIMENT CONTROL INLET HAT

NOTE:  
THE SEDIMENT CONTROL BARRIER SHALL BE A METAL  
OR PLASTIC/POLYETHYLENE RISER SIZED TO FIT INSIDE  
THE CATCH BASIN/MANHOLE; HAVE PERFORATIONS TO ALLOW  
FOR WATER INFILTRATION; HAVE AN OVERFLOW OPENING,  
FLANGES AND A LID/COVER.



SILT FENCE RING AND ROCK FILTER BERM  
USE WHERE INLET DRAINS IN AN AREA WITH SLOPES AT 1:3 OR LESS

NOTES:

SEE SPECS. 2573, 3886, & 3893.

MANUFACTURED ALTERNATIVES LISTED ON Mn/DOT'S APPROVED PRODUCTS LIST  
MAY BE SUBSTITUTED.

- ① ALL GEOTEXTILE USED FOR INLET PROTECTION SHALL BE MONOFILAMENT IN BOTH DIRECTIONS, MEETING SPEC. 3886 (2000 EDITION) FOR MACHINE SLICED. (MEETING SPEC. 3733 GEOTEXTILES, PROPOSED 2005 EDITION)
- ② FINISHED SIZE, INCLUDING POCKETS WHERE REQUIRED SHALL EXTEND A MINIMUM OF 10 INCHES AROUND THE PERIMETER TO FACILITATE MAINTENANCE OR REMOVAL.
- ③ INSTALLATION NOTES:  
DO NOT INSTALL PROTECTION IN INLETS SHALLOWER THAN 30 IN., MEASURED FROM THE BOTTOM OF THE INLET TO THE TOP OF THE GRATE. THE INSTALLED BAG SHALL HAVE A MINIMUM SIDE CLEARANCE BETWEEN THE INLET WALLS AND THE BAG MEASURED AT THE BOTTOM OF THE OVERFLOW HOLES OF 3 INCHES. WHERE NECESSARY THE CONTRACTOR SHALL CLINCH THE BAG, USING PLASTIC ZIP TIES, TO ACHIEVE THE 3 INCH CLEARANCE.
- ④ FLAP POCKETS SHALL BE LARGE ENOUGH TO ACCEPT WOOD 2 IN. X 4 INCH OR USE A ROCK SOCK OR SAND BAGS IN PLACE OF THE ROCK SOCK AND WOOD 2 IN. X 4 INCH.
- ⑤ SOCK HEIGHT MUST NOT BE SO HIGH AS TO SLOW DOWN WATER FILTRATION AND FLOOD ROAD.
- ⑥ 4 FT. LONG AND 5 INCH DIAMETER GEOTEXTILE SOCK, SEAM JOINED BY TWO ROWS OF STITCHING WITH A PLASTIC MESH BACKING OR HEAT BONDED (OR APPROVED EQUIVALENT). FILL ROCK LOG WITH OPEN GRADED AGGREGATE CONSISTING OF SOUND DURABLE PARTICLES OF CRUSHED COARSE AGGREGATE CONFORMING TO SPEC. 3137 TABLE 3137-1; CA-3 GRADUATION.

STANDARD SHEET NO.  
297.405 (4 OF 4)

STANDARD APPROVED:

TITLE:  
TEMPORARY SEDIMENT CONTROL  
STROM DRAIN INLET PROTECTION

REFERENCE DATE  
8-23-05

STATE PROJ. NO. \_\_\_\_\_ SHEET NO. \_\_\_\_ OF \_\_\_\_ SHEETS